

Tree Trimming and Removal

Trees and Power Lines:

We all depend on safe, reliable electricity to power our homes and business. We also, depend on our trees to give us shade in the summer and winter breaks from winter winds. It should be kept in mind that WCMES started trimming/removing eligible trees, without cost to the customer, about 40 years ago. During this time we have removed hundreds of trees where the individual benefits would not offset the cost of removal, but when evaluated the total results, there is no doubt that the program has been cost effective.

Trees that get too close to powerlines can cause problems with what we can depend on, our Electricity. They can cause power outages and threaten the public's safety. For these reasons WCMES has a tree trimming/tree removal policy in place.

Satisfied customers, dependable service, and the public's safety are the goals at WCMES. Trees that are not in danger of causing power outages or damaging WCMES property will not be trimmed or removed. The following will explain what trees are eligible to be trimmed or removed.

These guidelines are provided in order that all property owners may be treated equally and fairly in our attempt to maintain a tree free right-of-way.

By removing dangerous and eligible trees, we are eliminating potential problems that occur during wind and ice storms that cause power outages and customer inconvenience.

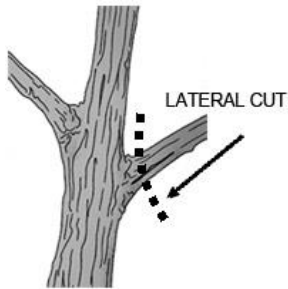
Why Trim Trees:

One reason for trimming trees is the safety factor. Trees conduct electricity, any tree that is close enough to come in contact with power lines could cause potential danger. For example, a child climbing a tree could potentially come in contact with the powerlines. Keeping line crews safe is another reason. When working on tree related outages we need the proper clearance so crews can make repairs. Service is yet another reason. If trees come in contact with lines they can break lines, cause outages, and even cause fires. So having clearance from poles and lines will help to maintain customer service.

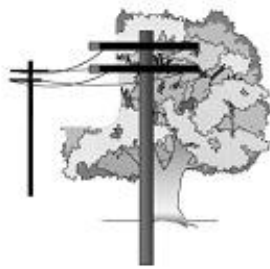
Why Lateral Trimming:

WCMES uses the Lateral Trimming Method which tends to direct growth away from the power lines. This method is recommended by the National Arbor Day Foundation and the State of Tennessee Forestry Division.

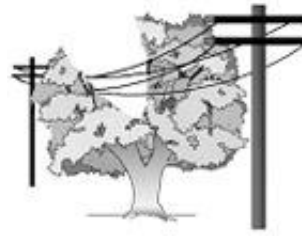
The "Rounding Over" Method of trimming stimulates uncoordinated growth and can threaten the life of the tree. Tree limbs that are cut in this way are more likely to break in wind and ice storms.



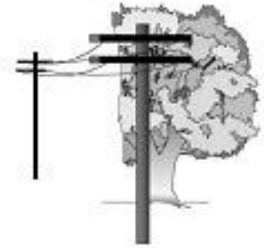
Lateral Cut



"L" Trimming



"V" Trimming



Side Trimming

Clearance Guidelines:

It takes approximately 3 to 4 years to complete a trimming cycle of our service area. For this reason WCMES maintains a clearance of our lines to help assure service.

Side trimming of primary lines:

15' minimum

Overhang of primary lines:

15' minimum

Padmount Transformer:

3' clearance on each side

6' clearance on door side

Service Lines:

Overhang 3' or 6' side trim.

No vegetation or vines are allowed to grow on WCMES poles or equipment.

At WCMES we strive to keep and maintain good public relations with our customers. Please read the following frequently asked questions below for more information.

Frequently Asked Questions:

Why are you trimming my trees?

The main objective for WCMES is to provide our customers with power. Keeping trees out of power lines will help assure this service is provided.

Which trees will be trimmed?

Most trees within falling distance of primary lines will have to be trimmed from time to time.

How often will you trim my trees?

WCMES is on a rotation cycle, it usually takes 3 to 4 years to make a complete cycle of our service area. We will rotate to different areas and towns throughout the year. Generally, the rural areas get trimmed in spring and summer while the towns will get trimmed in fall and winter.

Who does the trimming?

WCMES has our own in house right-of-way crew that has been trained to trim trees the proper way to maintain the correct clearance.

Will you cut trees down on service lines?

No, on lines that run from transformer to house, known as service lines, we will lower the line so customer can have tree cut down or removed. Then WCMES will re-connect the line at no cost to the customer.

What about debris left?

When doing routine trimming, WCMES will clean up and remove debris from trees being trimmed.

What about trees cut down, will they be removed?

We will remove all trees unless prior arrangements are made.

What about in cases of emergency?

If there is an major outage and crews have to trim or cut trees to restore power so as to assure safety of the crew then no, WCMES will not come back to remove brush or trees. In some cases ruts are made on property to get to poles or lines. These ruts, in emergencies, will not be repaired.

When will you trim my trees?

WCMES is on a rotation cycle that will allow the service system to be trimmed every 3 to 4 years. We will rotate to different areas and towns throughout the year. Generally, the rural areas get trimmed in spring and summer while the towns will get trimmed in fall and winter.

What if I have a danger tree or emergency?

An onsite visit will be made in such situations. If the tree is indeed a dangerous or emergency situation it will be dealt with at the time. If the tree is not an emergency then request and tickets will be worked when crews are in that area doing routine work.

What if I have more questions?

Please contact WCMES at (731) 587-9521 for more information.